

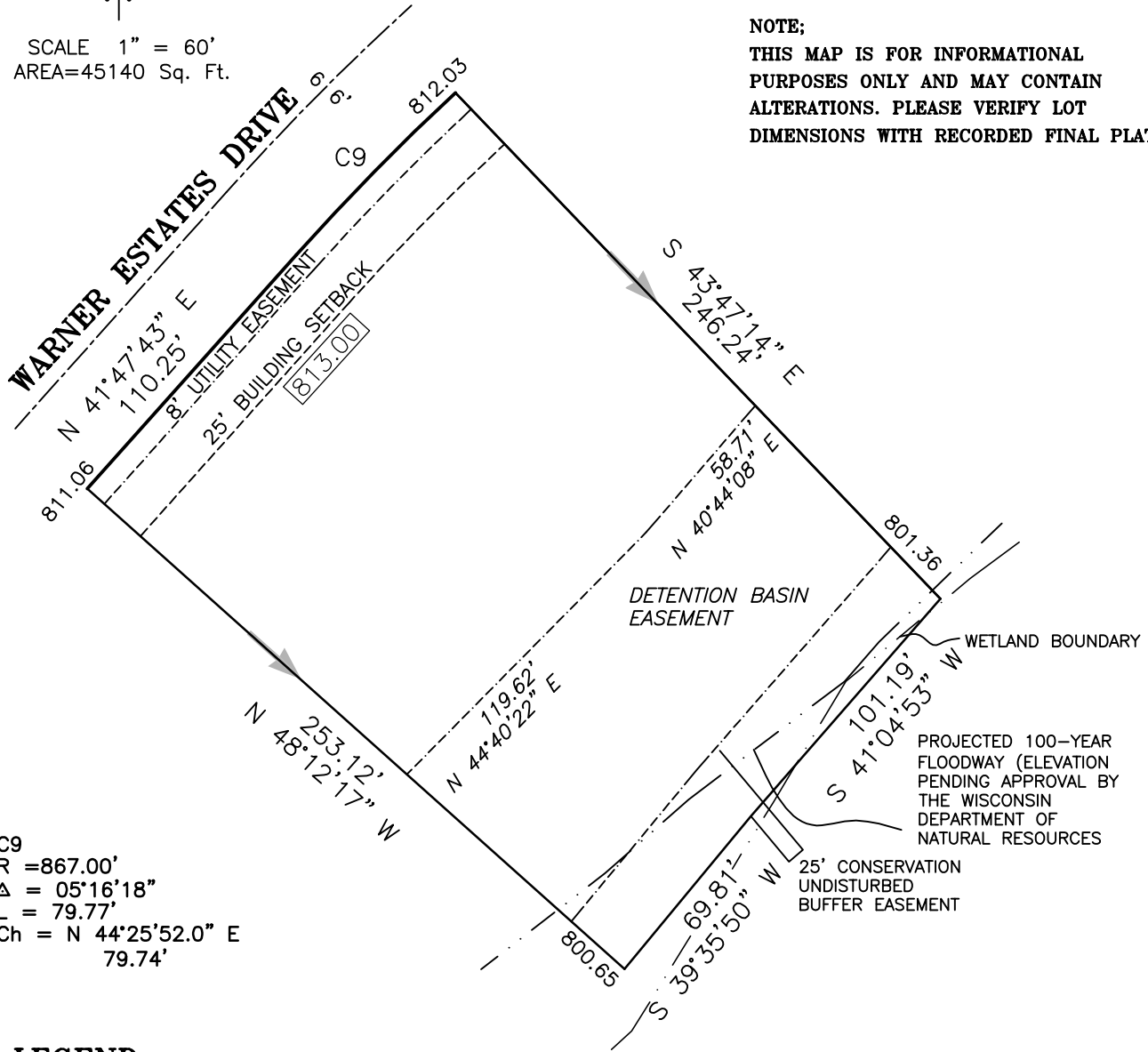
LOT 6
THE ESTATES AT WARNER CREEK
TOWN OF GRAND CHUTE
OUTAGAMIE COUNTY, WISCONSIN

FOR: CASALOMA PROPERTIES, INC.



SCALE 1" = 60'
 AREA=45140 Sq. Ft.

NOTE;
 THIS MAP IS FOR INFORMATIONAL
 PURPOSES ONLY AND MAY CONTAIN
 ALTERATIONS. PLEASE VERIFY LOT
 DIMENSIONS WITH RECORDED FINAL PLAT.



C9
 R = 867.00'
 Δ = 05°16'18"
 L = 79.77'
 Ch = N 44°25'52.0" E 79.74'

LEGEND

- 814.19 PROPOSED ELEVATION
- [818.50] GROUND ELEVATION AT FOUNDATION OR GARAGE FLOOR ELEVATION
- ➔ DIRECTION OF PROPOSED DRAINAGE

BENCHMARK

TAG BOLT ON HYDRANT AT
 LOTS 20 AND 21
 ELEVATION = 812.95



Martenson & Eisele, Inc.

Planning - Surveying - Engineering - Architecture

1919 American Court, Neenah, WI 54956
 Phone (920) 731-0381 Fax (920) 733-8578

www.martenson-eisele.com
 info@martenson-eisele.com

PROJECT NO. 621-400
 THIS INSTRUMENT WAS DRAFTED BY: kml