

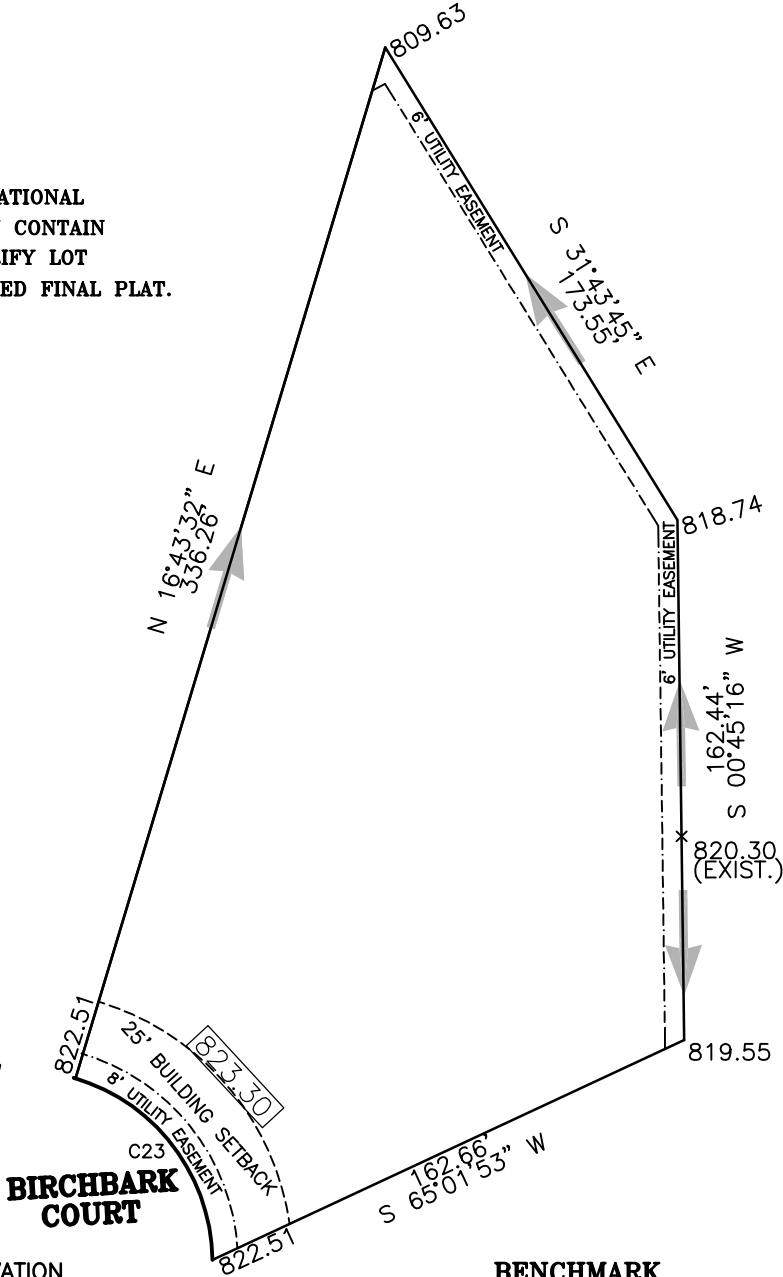
LOT 17
THE ESTATES AT WARNER CREEK
TOWN OF GRAND CHUTE
OUTAGAMIE COUNTY, WISCONSIN

FOR: CASALOMA PROPERTIES, INC.



SCALE 1" = 60'
 AREA = 42380 sq. Ft.

NOTE;
 THIS MAP IS FOR INFORMATIONAL
 PURPOSES ONLY AND MAY CONTAIN
 ALTERATIONS. PLEASE VERIFY LOT
 DIMENSIONS WITH RECORDED FINAL PLAT.



C23
 R = 60.00'
 $\Delta = 72^{\circ}31'12''$
 L = 75.94'
 Ch = N $37^{\circ}00'52.0''$ W
 70.97'

LEGEND

- 814.19 PROPOSED ELEVATION
- 818.50 GROUND ELEVATION AT FOUNDATION OR GARAGE FLOOR ELEVATION
- DIRECTION OF PROPOSED DRAINAGE
- Martenson & Eisele, Inc.**

Planning - Surveying - Engineering - Architecture

1919 American Court, Neenah, WI 54956
 Phone (920) 731-0381 Fax (920) 733-8578

www.martenson-eisele.com
 info@martenson-eisele.com

BENCHMARK

TAG BOLT ON HYDRANT AT
 LOTS 17 AND 18
 ELEVATION = 824.93